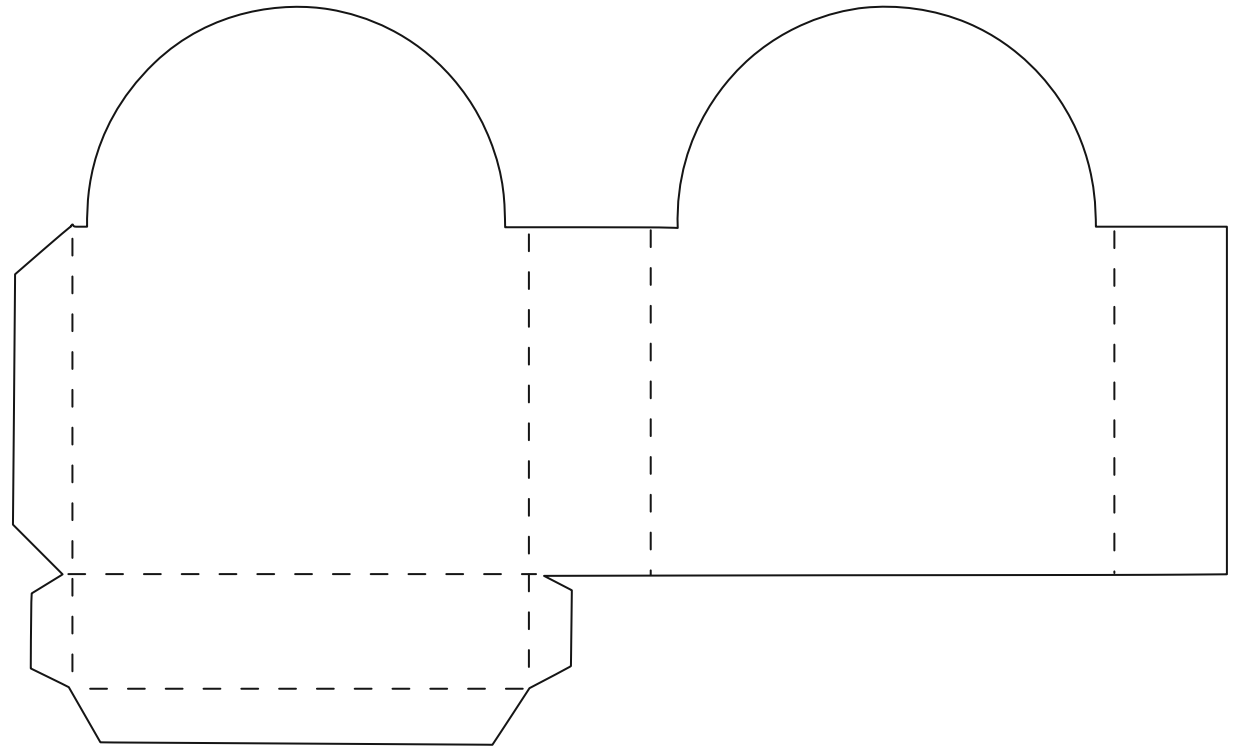


Finished box measures 4½ inches tall x 3½ inches wide and 1 inch deep

1. Cut around the solid black lines
2. Fold or use a perforated tool on perforated lines
3. Bring the side with the flap over to the other side, tuck bottom inside box and glue flap to the outside of the box.



Back



Front



Supplies:
scissors
folding or perforation tool
low temp hot glue gun
and glue sticks