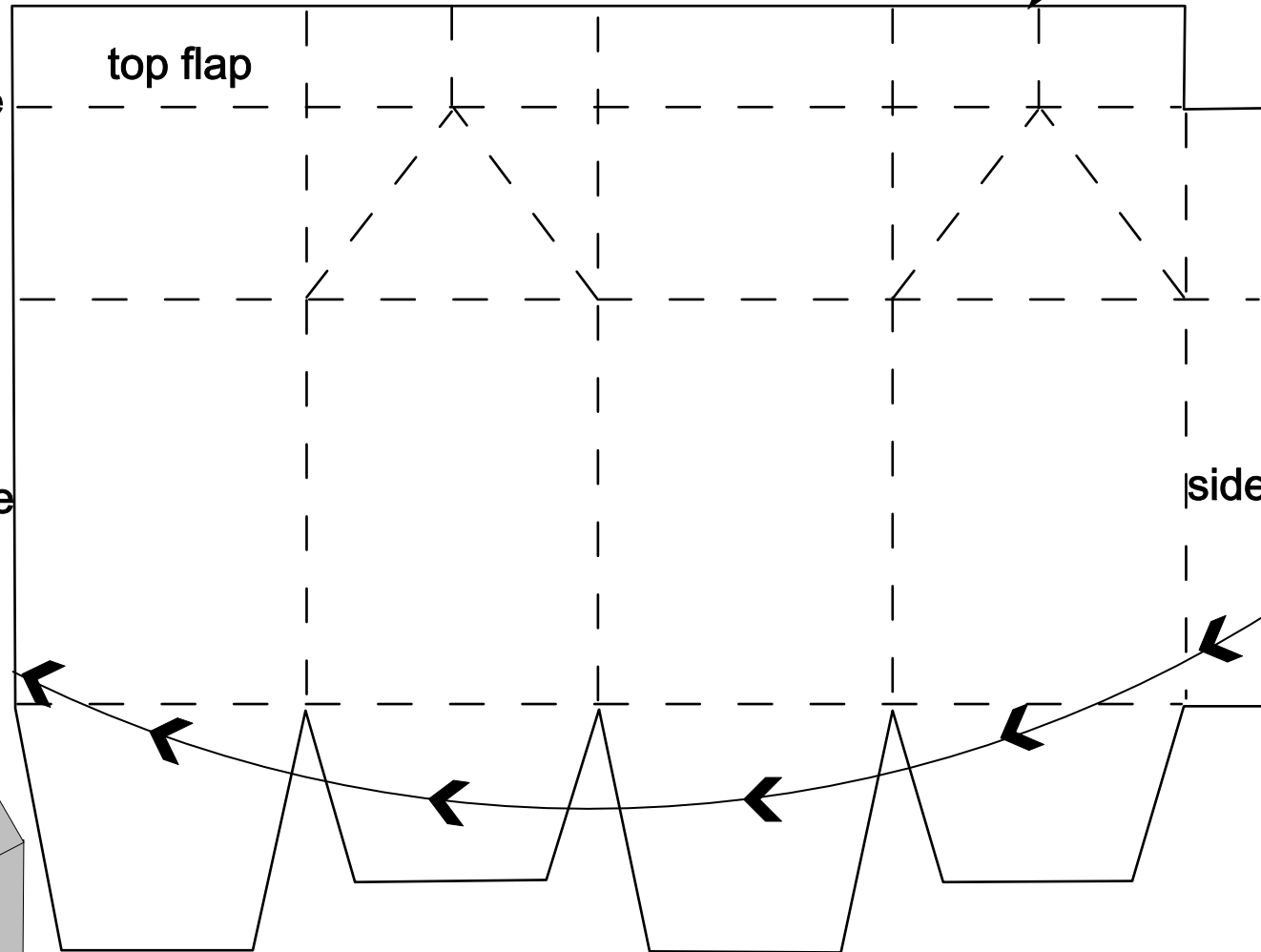


1. •Fold all perforated sections

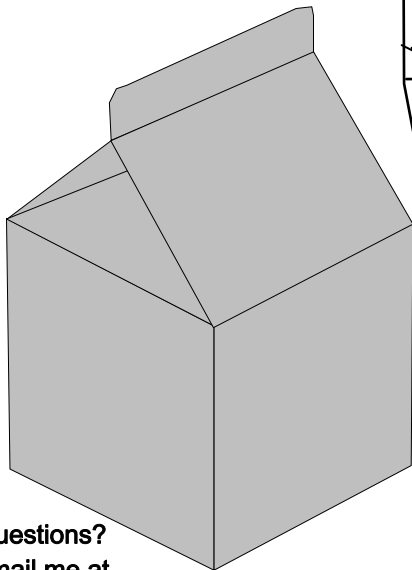
2. •Turn the carton so that the inside is facing you, and bend the two triangle shaped perforated sections

5. •Take the two triangle sides at the top, press them in and staple, tape or glue the top flap.



4. •Bring the two side together with the print on the outside. Tape or glue closed

3. •Fold in every other side of the bottom. Example( short,long,short,long)  
Tape or glue closed.



Questions?  
email me at  
sheryl@ladybehindthecurtain.com

## Milk Carton Party Favor Box Instructions